



COMMUNICATION CHAIR & MEMBERSHIP COMMITTEE REPORT February 2023

Submitted by Dana Ngyuen, MD, FAAFP and Grant Greenberg, MD, MHSA, MA

LISTSERV

Thank you for your ongoing engagement with the listserv & our Connect community!

As a reminder, the Connect platform can function as a listserv (just email to ADFM-adfmchairs@connectedcommunity.org or ADFM-adfmadministrators@connectedcommunity.org to reach the Chairs' and Administrators' listserves, respectively).

If you are new to the group or haven't played with the features yet, note that the Connect platform has the option to set your individual preferences for a daily digest or receiving each message as a separate email to your inbox and the ability to easily view an archive of messages. The community space allows easier resource sharing for our committees and programs and also features a place where all resources sent on the listserv will be saved & housed for future reference.

To set your preferences and access the archives, log in with your ADFM member profile information at <https://connect.adfm.org/>

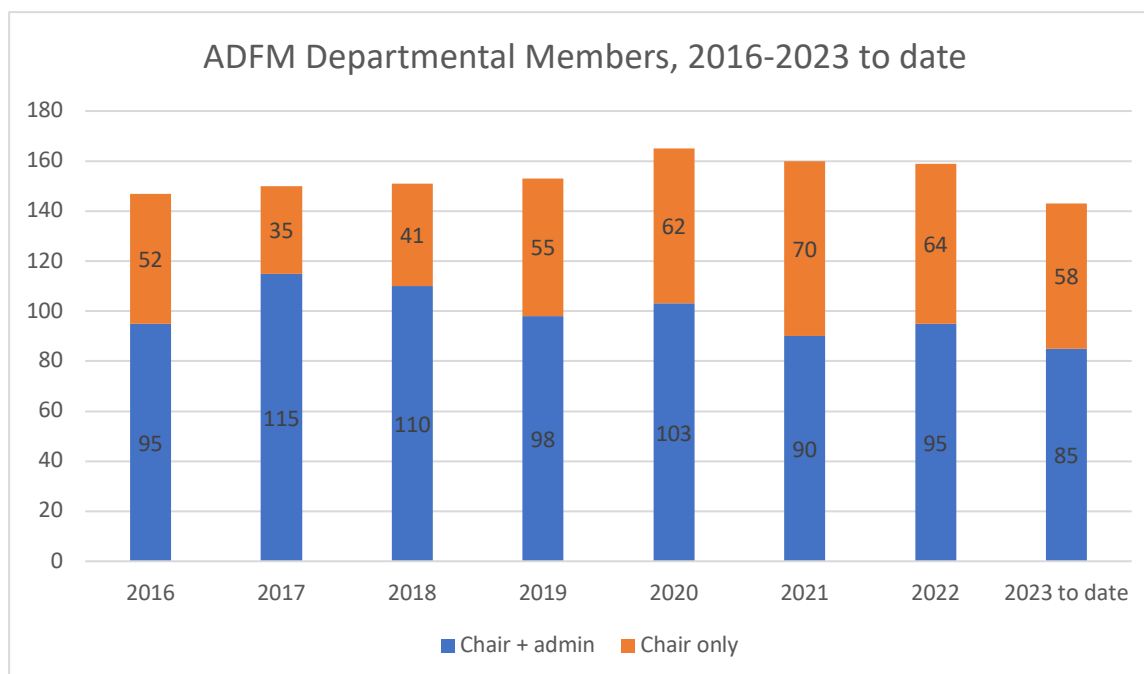
As we have done in the past, we continue to send an announcement of and welcome to new members and Associate Members to the listservs. Thank you for helping us with these welcomes – and a brief reminder to make sure to stay within our “[listserv etiquette](#)” guidelines!

In particular, please remember to only share job descriptions that are the chair/administrator level or higher (e.g. Dean is OK), to not share surveys, and to send congratulations and other similar messages directly to the sender instead of the whole group.

MEMBERSHIP

We ended the 2022 program year with strong membership numbers: 159 department chairs, 95 administrators, 52 Associate members, 5 Associate Administrators, and 12 Lifetime members.

As of February 2, 2023, we have 143 paid departments. Please make sure to renew if you haven't already done so!



New Departmental Members

For the 2022 dues year, we a few brand new departments, including Hennepin Healthcare, UNC Health Sciences at MAHEC, New York Institute of Technology College of Osteopathic Medicine, and Stamford Health.

We continue outreach to other possible members, particularly osteopathic departments who are currently underrepresented in ADFM and new departments at the new medical schools popping up around the country.

If you have any contacts at departments that are not members of ADFM, please encourage them to join ADFM if you think they would benefit – your word-of-mouth is our best outreach. Thank you all for your support as we work to make ADFM inclusive and welcoming!

Associate Membership

Our Associate Membership category, which started in 2018, continues to grow. As noted above, in 2022 we had 52 Associate members, 5 Associate Administrators, and 12 Lifetime members.

The option to add an Associate Member has been a valuable one for many departments and we have appreciated the opportunities for enhanced diversity, greater breadth of knowledge across the organization, and leadership development it has provided. ***Please consider who in your department might benefit from participation in ADFM as an Associate Member!***